



SN-10 (SN-15, SN-20)



Programmable controller Grand Meyer SN series with remote control function via Wi-Fi network for electrical heating.

- Modern design.
- Large LC-Display with extended indication and weather forecast.
- Possibility of manual control and software installation of up to six modes (events) for each day of the week.

TECHNICAL DATA

- Supply voltage 230V AC(±10%), 50 Hz
- Output relay SPST 20A
- Power consumption 1W max (Wi-Fi 3W max)
- Ambient temperature from -5°C to + 50°C
- Temperature setting range 5° - 95°C (default 5° - 50°C)
- Hysteresis (adjustable) from 0,5°C to 10°C
- External sensor resistance 10 kOhm at +25°C
- Protection level IP20
- Shell material Anti-Flammable PC

BUTTONS AND SYMBOLS

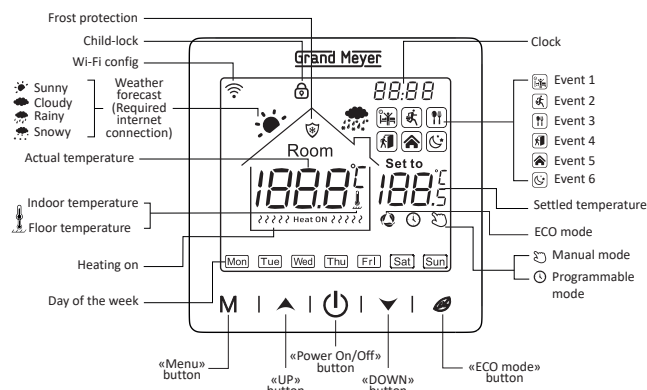


Table 1.

Events	Workdays		Time		Temperature	
			Factory setting	↕	Factory setting	↕
Workdays	1		06:00	Press «▲» or «▼»	20°C	Press «▲» or «▼»
	2		08:00		15°C	
	3		11:30		15°C	
	4		12:30		15°C	
	5		17:00		22°C	
	6		22:00		15°C	
Week-ends	1		06:00		20°C	
	2		20:00		20°C	

USER OPERATION


Manual mode

Temperature controller will turn on or off the electric heating to maintain the set temperature, regardless of the currently running program.




Programmable Mode

Temperature controller will turn on or off the electric heating depending on the set time and temperature according to a program in which up to 6 heating events can be set for each day of the week. This program will be repeated every week.

ECO mode

Press «» shortly to enter ECO mode, and the temperature will be set to 18°C.

SETTING UP TEMPERATURE CONTROLLER

- Press the «M» menu button to select manual or programmable mode. Hold the menu button «M» for 3 seconds to edit the weekly program.
- Press the «» ON/OFF button to turn on/off the controller.
- Hold the «» ECO mode button for 3 seconds to edit time and date.
- Press the «▲» UP button or «▼» DOWN button to change the set temperature by 0,5°C.
- Hold for 3 seconds «▲» UP button and «▼» DOWN button together to activate the option «Child lock». The «» child lock icon indicate that the «Child lock» is on.

SETTING UP PROGRAMMING MODE

Hold the menu button «M» for 3 seconds to set the weekly program (table 1).

ADVANCED SETTING

(Professional Technician preferred)


In off mode, hold for 3 seconds «M» to enter advanced setting mode, then re-press «M» to switch to next mode. Press «» to save and exit advanced setting mode.

Table 2.

Code	Mode	Set value (press «▲» или «▼»)
0Rdr	Not used on this model	
1RdU	Temperature calibration	Set required value
2SEN	Active temperature sensor	if: only internal build-in sensor 0UF: only external sensor (set by default) RL: both sensors
3Lif	External sensor upper temperature limit	From +5°C to +60°C (+35°C by default)
4d,F	Temperature hysteresis	From 0,5°C to 10°C (1°C by default)
5LFP	Frost protection	0R : Turns ON 0FF : Turns OFF
6Prg	Weekly programming	12345: 5 working/2 weekend days 123456: 6 working/1 weekend days 1234567: 7 working days
8dLY	Not used on this model	
9Hif	Temperature upper limit	From +5°C to +95°C (+50°C by default)
RRRL	Hard reset	Press and hold for 3 seconds «▲» to reset settings to defaults

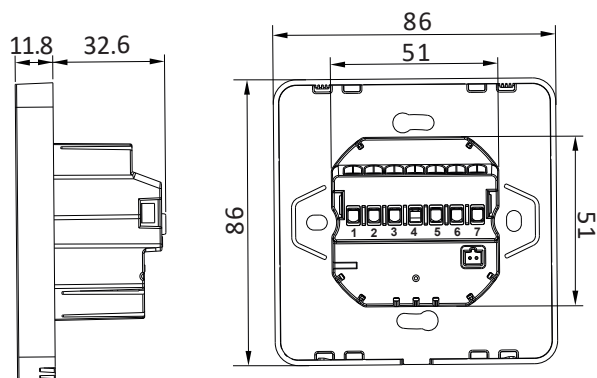


TEMPERATURE SENSOR ERROR

Please select the correct type of active temperature sensor operation. When the display shows the error E0/E1, the controller won't operate until the error is eliminated.

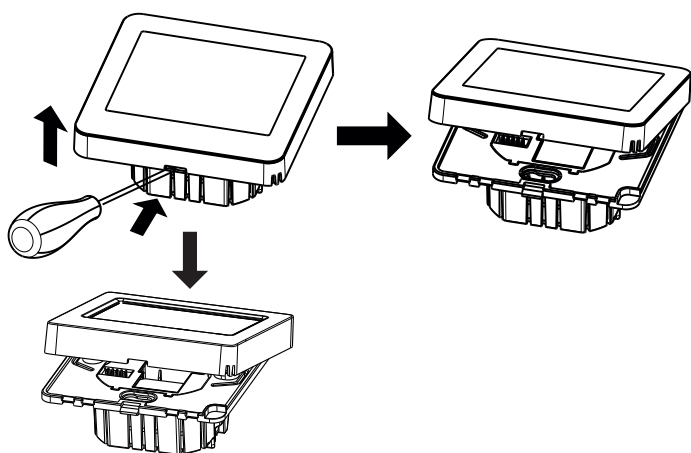
E0: Sensor short circuit / internal build-in sensor disconnected.
E1: Sensor short circuit / external sensor disconnected.

DIMENSIONS (mm)

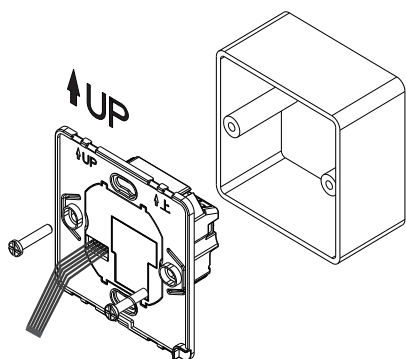


INSTALLATION

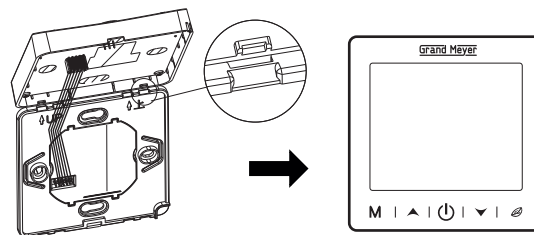
1. Carefully remove the front cover of the controller using a screwdriver.



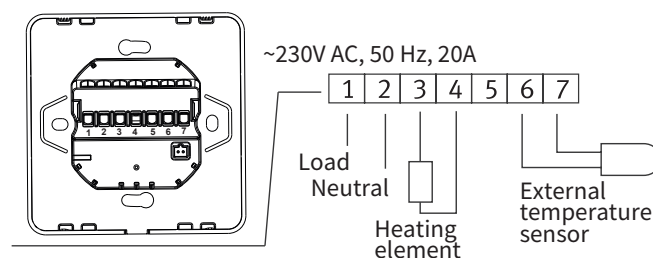
2. Connect the wires to the contact terminals of the controller in accordance with the wiring diagram. Recommended stripping length 7-9 mm.
3. Use a screwdriver and screws to secure the back part of the controller to the mounting box.



4. Secure the front cover through the snap joint.



WIRING DIAGRAM



CONNECTING TO A WI-FI NETWORK

To set up the Wi-Fi mode turn off the temperature controller, then press and hold for 3 seconds «ECO» ECO mode button.



For remote access to the controller via Wi-Fi, download a mobile application adapted for our controller.

The app «Smart Life» is available on Google Play for Android and the App Store for iOS.

SECURITY MEASURES

1. Temperature controller must be connected by a qualified, certified electrician.
2. All work on installation and connection of the temperature controller must be carried out without the power supply connection.
3. Use only the plastic mounting box to mount the temperature controller.
4. Cleaning the temperature controller:
 - The power supply must be disconnected when wipe off dust and dirt with a soft cloth or paper towel.
 - Do not use any cleaning agents or harsh chemical solvents.

WARRANTY OBLIGATIONS

The warranty period is 24 months from the date of sale.

During the warranty period, the buyer has the right to repair or replace the product if any faults are discovered that have occurred through the fault of the manufacturer and provided that the instructions for installation and operation are followed. Warranty obligations do not apply to temperature controllers that have mechanical damage, as well as if the defect has arisen as a result of improper installation, connection and operation of this device.

RECYCLING OF OBSOLETE APPLIANCES



Appliances with this label must not be disposed off with the general waste. They must be collected separately and disposed off according to local regulations.