

# CONTACT COMFORT, NO CONFINEMENT

Midea Electric Water Heater with WiFi  
Salute Flex

[midea.com](https://midea.com)



**Midea**

*make yourself at home*

SHOWERFlex

## DUAL-TANK HEATING SYSTEM SAVING ON TIME & ENERGY

Thanks to the innovative dual-tank heating system with two heating elements, the heating efficiency is greatly improved and your waiting time is saved. It can also be flexibly switched to single-tank heating mode for your me-time enjoyment, saving on energy and your bills!



17% Reduced Heating Time\*  
Dual-tank heating mode for  
a family of up to 4 people.



50% Saved Electricity\*  
Single-tank heating mode  
for 1-person enjoyment.

\*\*The comparison is made between Midea Water Heater Salute Flex and traditional one-tank water heaters under the conditions of same water inlet temperature (15°C), same target water heating temperature (75°C), same machine power (2000W), same machine capacity (30, 50, 80 or 100L).



INSTALLFlex

## SUPER SLIM BODY, FLEXIBLE INSTALLATION

Our water heater, designed to be placed either vertically or horizontally, provides more flexible installation options. The 1/3 thinner body\*<sup>1</sup>, as a result of the dual-tank structure, can fit in any tight space, and it always makes your home look amazing!

### Vertical Or Horizontal Installation



### 1/3 Thinner Body



\*1: The comparison is made between Midea Electric Water Heater Salute Flex and traditional one-tank water heaters under the same condition of machine capacity (30, 50, 80 or 100L).



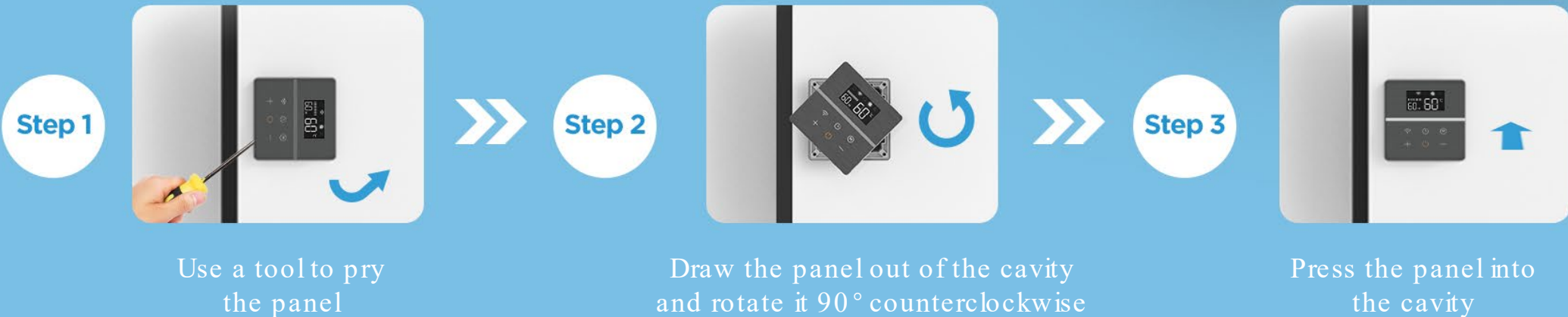
INSTALLFlex

## ROTATABLE CONTROL PANEL FOR IDEAL OPERATING ANGLE

The metallic control panel can be rotated to match with the machine's installation direction, so that you can operate the water heater at the most comfortable angle of view. Just between you and us, the secret of this unique flexibility lies in the centrosymmetric square shape.

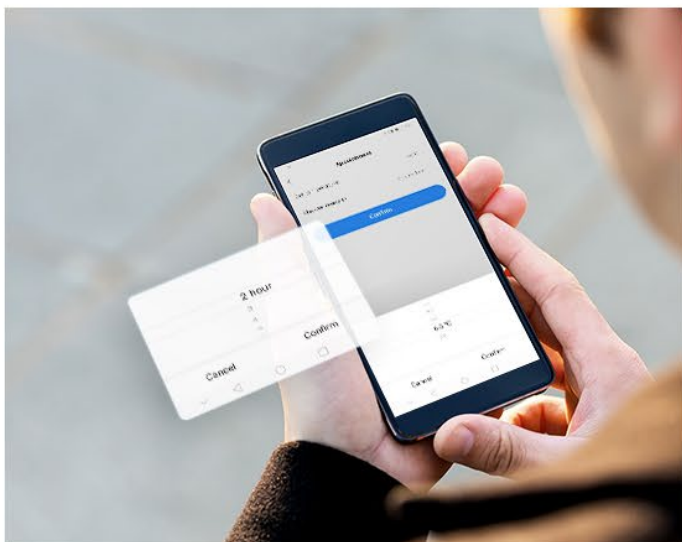


### 3 Steps To Rotate The Panel



# CONNECT POSSIBILITIES WITH MSmart Life APP

Though WI-FI connection and our official MSmart Life APP, the water heater and your smart phone can be connected to create more tiny miracles for you to feel at ease, and enjoy the shower.



Make An Appointment  
for Heating



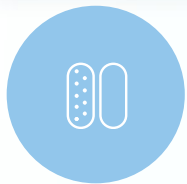
Indicate Working Status



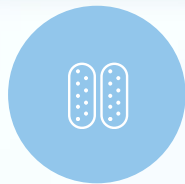
Shut Down the Appliance  
Remotely to Save Energy

# MULTI SHOWER MODES, ONE-CLICK AWAY

Facilitate you to conveniently choose the work modes on your smart phone, no need to stand by the water heater. Enjoy your precious me-moment, and leave the rest with our water heater.



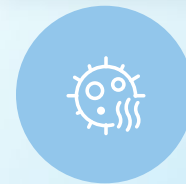
Single-tank



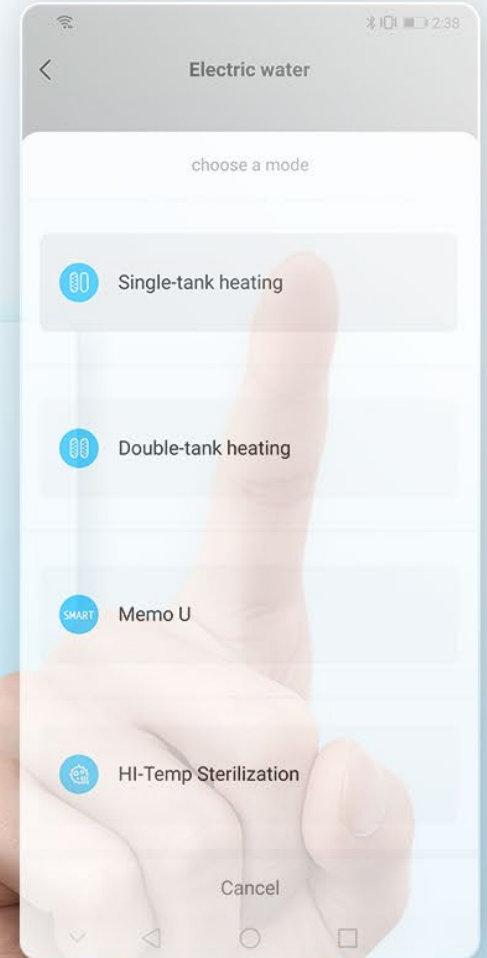
Double-tank Heating



Memo U



Hi-Temp Sterilization



# MemoU, 7 DAYS TO KNOW YOUR SHOWER HABITS

By recording and learning your shower habits in 7 days, our smart water heater creates your exclusive memo, so that it can prepare hot water in advance for you, just at the right temperature and the right time. Know you well to serve you well.



Remember you like taking a shower before bedtime.



Taking a refreshing morning shower is your daily routine, and it is well noted!



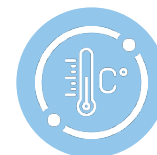
# MemoU, ALWAYS WARM WITH MINIMUM ENERGY USE

**VDE**

**Tested**  
✓ Up to 23%  
energy saving



**Only the Needed Temp & Energy**  
Ensure only the needed energy is consumed by automatically setting the temperature you prefer based on the memo of your shower habits.



**Slightly Warm Water for Washing Hands Cozily**  
Store warm water at minimum 45°C in no-shower time, so that you can wash hands or carry out some hand-wash with comfort, especially in cold winter.



# A MEMBER OF GOOGLE HOME INTELLIGENT HEATING CONTROL WITH GOOGLE ASSISTANT

Connecting to Google Home, just switch on electric water heater by voice and tell google assistant to adjust into the temperature you prefer.

 **Switch On/Off**

“OK GOOGLE, switch on the water heater.”

 **Precise Temperature Setting**

“OK GOOGLE, set the temperature of the water heater to 55°C.”

 **Anytime Temperature Check**

“OK GOOGLE, what is the water heater temperature?”



# FULL-PATH PURE FLOW, 99.99% FREE OF BACTERIA

Thanks to the Full-Path Bacteria Defense System, you will enjoy an all-around healthy shower in a pure flow. Integrating with the Anti-bacterial Copper Valve and the Ag+ Anti-bacterial Water Inlet, together with the 75°C Hi-Temp ABT Program, this system can gradually improve the water quality and prevent any possible secondary pollution in the pipeline.



SGS Certified 99.99% Bacteria Free

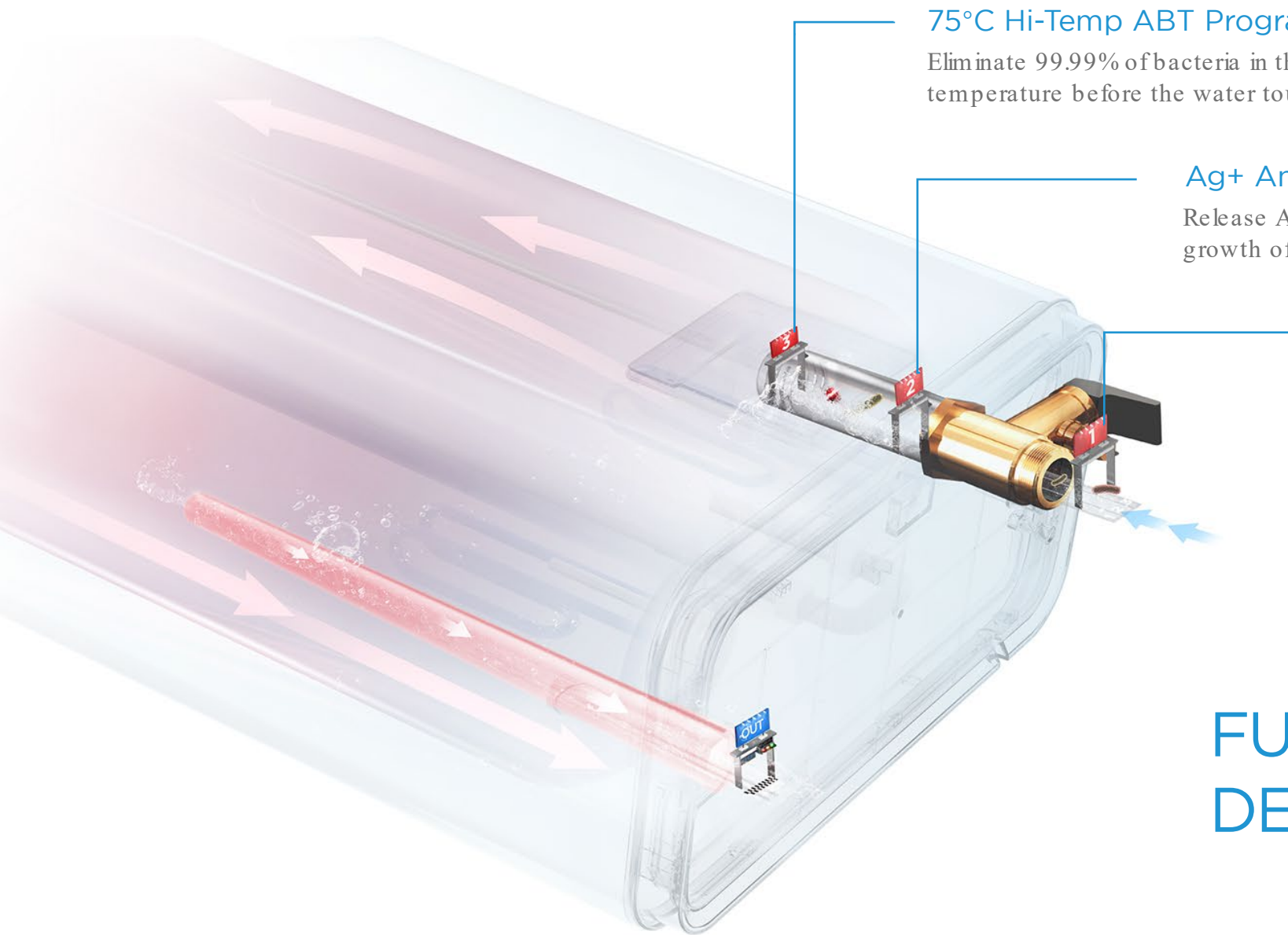


Full-Path Bacteria Defense System



Avoid Secondary Pollutions





### 75°C Hi-Temp ABT Program

Eliminate 99.99% of bacteria in the water with 75°C high temperature before the water touches your skin.

### Ag+ Anti-bacterial Water Inlet

Release Ag+ ions to consistently inhibit the growth of bacteria in the water.

### Anti-bacterial Copper Valve

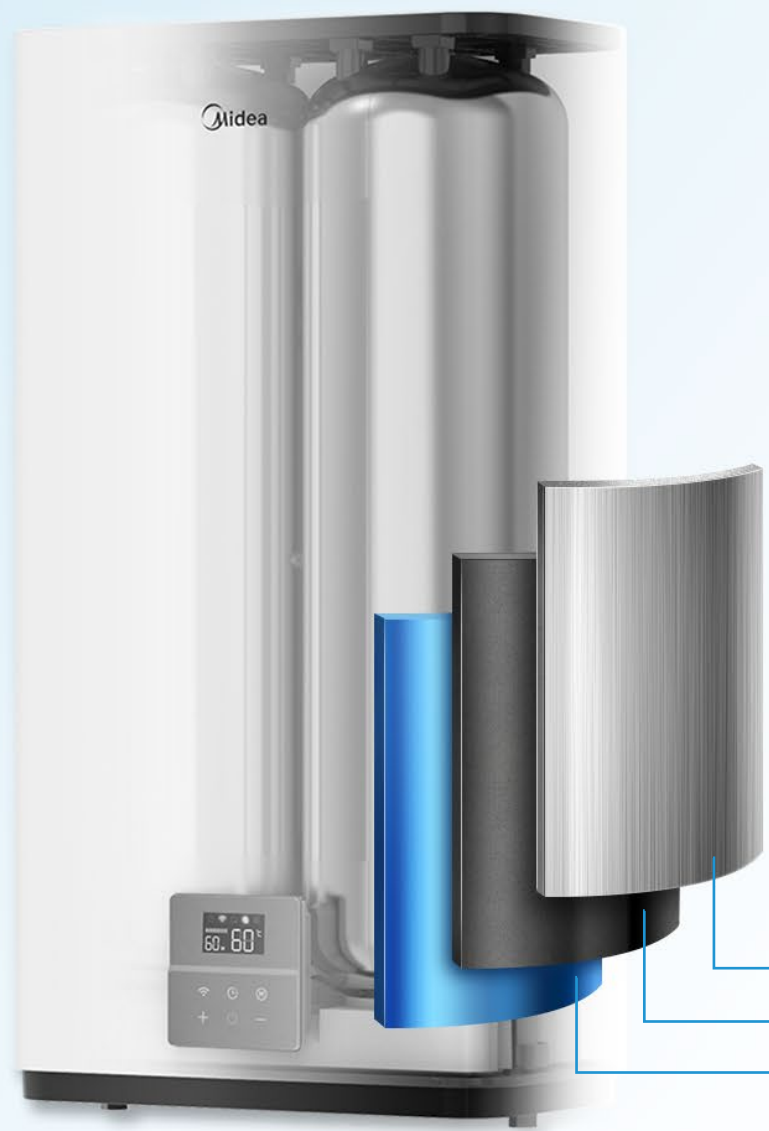
Switch on the anti-bacterial journey of water.

# FULL-PATH BACTERIA DEFENSE SYSTEM

# GERM-FREE BATHING EXPERIENCE: THE PARENTS' CHOICE

Offer a healthier shower to give more tender loving care for kids, as their skin is more delicate than adults. Water of good quality is always your first choice.





# LONG LIVE THE TANK, WITH Ti+ SapphirEnamel ATTACHED

The innovative Ti+ SapphirEnamel layer, promotes the water tank to be more durable, by efficiently resisting corrosion & rust and avoiding scale buildup, sustaining your superior use experience.



7-Year Tank Warranty



Anti-Rust,  
Corrosion or Scaling

Ti+ SapphirEnamel Tank with 3-Layer Tech

High-level decarburization steel plate layer

Micro-powder adhesion layer

850 °C Hi-temp sintered Ti+ SapphirEnamel layer

# PLUG & PLAY HEATING ELEMENTS

Thanks to the unique water-electricity separation structure protected by the anti-scale Ti+ SapphirEnamel casing, the Plug & Play heating elements (also known as the block-type heating elements) can heat up water safely without contacting the water, and the list of its benefits can go on and on.



**Water-Electricity Separation, Safe Use & Worry Free**  
Your safety is guaranteed by the unique heater-casing separation design that ensures no contact between water and electricity.



**DIY Replacement, Cost & Time-Saving**  
The Plug&Play heating elements can be replaced by yourself without effort, saving cost and time.



# MULTI-POINT SHOWERSAFE

The reliable ShowerSafe system is specially devised, after a great amount of experiments and simulation tests, in order to guarantee a comfortable and safe shower experience for you to truly enjoy yourself.



Dry Heating Prevention



IPX4 Water-proof MBachine Body



Pressure-relief Safety Valve



Auto Power Off For Overheat Protection



# SPECIFICATIONS

MODEL	D30-20ED6	D50-20ED6	D80-20ED6	D100-20ED6
Capacity, L	30 (27)	50 (47)	80 (74)	100 (93)
Rated Power, W	2000	2000	2000	2000
Voltage, V	220~240	220~240	220~240	220~240
Frequency, HZ	50/60	50/60	50/60	50/60
Current, A	8.69	8.69	8.69	8.69
External Dimensions H/W/D, mm	469*288*589	469*288*875	569*321*902	569*331*1087
Number Of Users	1-2	2-3	2-4	3-5
Control Panel	ELECTRONIC	ELECTRONIC	ELECTRONIC	ELECTRONIC
Temperature Range, °C	30-75	30-75	30-75	30-75
Heating Time, hr (if water starts at 15°C and targets at 75°C, for reference only)	10.5	1.75	2.8	3.5
Maximum Working Pressure, Mpa	0.75	0.75	0.75	0.75
Waterproof Grade	IPX4	IPX4	IPX4	IPX4
Heating Indicator	Y	Y	Y	Y
Over Heat Protection	Y	Y	Y	Y
Temperature Limit, °C	93	93	93	93
Inner Tank	Enamel tank	Enamel tank	Enamel tank	Enamel tank
Magnesium Anode Size, mm	φ18*110	φ18*110	φ18*110	φ18*110
Type of Heating Element	dry	dry	dry	dry
Power Cable length, m	1.5	1.5	1.5	1.5
Type Of Mounting	VERTICAL/HORIZONTAL	VERTICAL/HORIZONTAL	VERTICAL/HORIZONTAL	VERTICAL/HORIZONTAL
Standard Mount	Hang Mount	Hang Mount	Hang Mount	Hang Mount
Water Connection size	G1/2	G1/2	G1/2	G1/2
Mount Accessory	Bulgy Screw/Safety Valve/Mounting plate	Bulgy Screw/Safety Valve/Mounting plate	Bulgy Screw/Safety Valve/Mounting plate	Bulgy Screw/Safety Valve/Mounting plate

