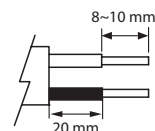


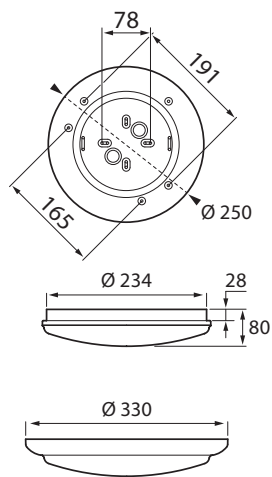
LUMI II

IP44 -0-   

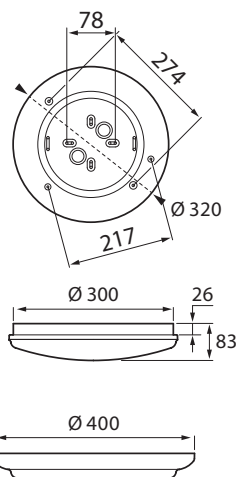
YLEISVALAISIN | UNIVERSAL LUMINAIRE | ALLMÄN ARMATUR



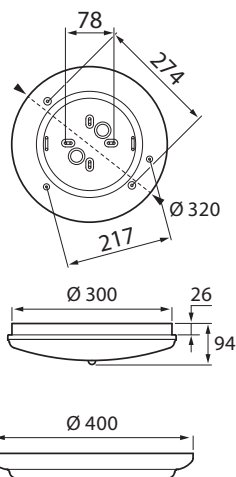
LUMI II 250



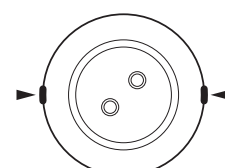
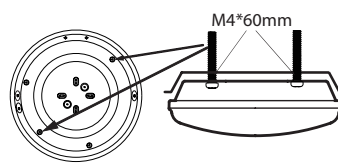
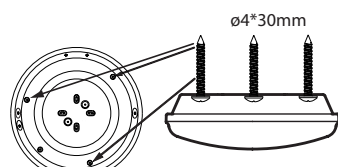
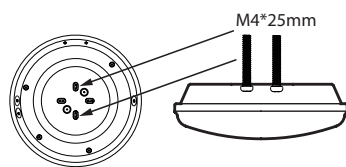
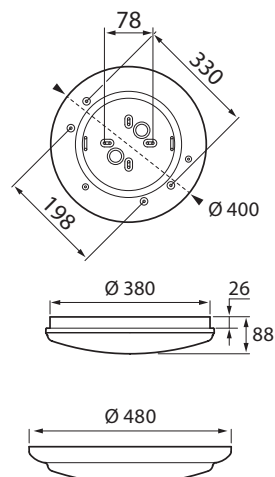
LUMI II 320



LUMI II 320 PIR



LUMI II 400



LUMI II 250

SNRO	E-NR	KOODI/CODE	LUMEN	KG	EAN	
4297201	7502868	A2LUFA	LUMI II 250 IP44 6W/830	450	0,55	6435200219664
4297202	7502869	A2LUFB	LUMI II 250 IP44 6W/840	480	0,55	6435200219671
4297203	7502887	A2L UFC	LUMI II 250 IP44 6W/830 RA M-S	450	0,82	6435200219688
4297204	7502888	A2L UFD	LUMI II 250 IP44 6W/840 RA M-S	480	0,82	6435200219695

LUMI II 320

SNRO	E-NR	KOODI/CODE	LUMEN	KG	EAN	
4297205	7502889	A2L UFE	LUMI II 320 IP44 12W/830	900	0,8	6435200219701
4297206	7502890	A2L UFF	LUMI II 320 IP44 12W/840	960	0,8	6435200219718
4297208	7502891	A2L UFG	LUMI II 320 IP44 12W/830 RA MS	900	0,85	6435200219725
4297209	7502892	A2L UFH	LUMI II 320 IP44 12W/840 RA MS	960	0,85	6435200219732
4297210	7502893	A2L UFI	LUMI II 320 IP44 12W/840 SMART RADAR	1000	0,85	6435200219749
4297211	7502894	A2L UFI	LUMI II 320 IP44 12W/830 DIM	1000	0,82	6435200219756
4297212	7502895	A2L UFK	LUMI II 320 IP44 12W/840 DIM	1100	0,82	6435200219763
4297218	7502901	A2L U FQ	LUMI II 320 12W/840 RA 10-100	1000	0,85	6435200219824
4297217	7502900	A2L UFP	LUMI II 320 IP44 12W/840 PIR MS	1000	0,85	6435200219817

LUMI II 400

SNRO	E-NR	KOODI/CODE	LUMEN	KG	EAN	
4297213	7502896	A2L UFL	LUMI II 400 IP44 18W/830	1400	1,17	6435200219770
4297214	7502897	A2L UFM	LUMI II 400 IP44 18W/840	1500	1,17	6435200219787
4297215	7502898	A2L UFN	LUMI II 400 IP44 18W/830 RA MS	1400	1,28	6435200219794
4297216	7502899	A2L UFO	LUMI II 400 IP44 18W/840 RA MS	1500	1,28	6435200219800
4297219	7502902	A2L UFR	LUMI II 400 18W/840 RA 10-100	1000	1,28	6435200219831

LISÄTARVIKKEET

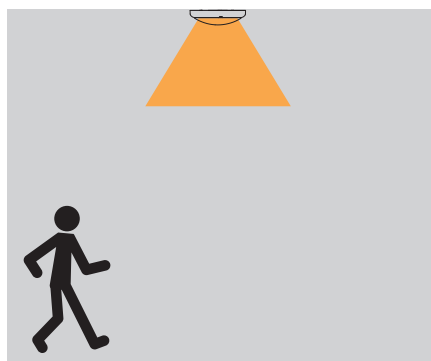
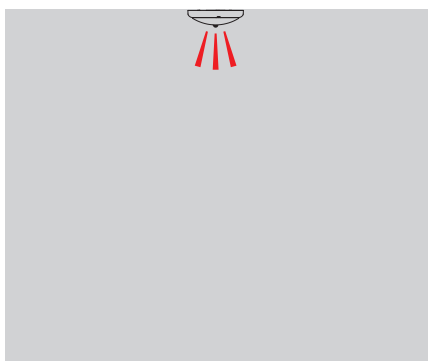
SNRO	E-NR	KOODI/CODE	KG	EAN	
4209625	7500822	A2LUAX	LUMI II KORISTERENGAS 250 VA	0,16	6435200187727
4209626	7500823	A2LUBX	LUMI II KORISTERENGAS 320 VA	0,21	6435200187734
4209627	7500824	A2LUCX	LUMI II KORISTERENGAS 400 VA	0,34	6435200187741

Valaisimen saa asentaa vain sähköalan ammattilainen. Käytä ainoastaan syöttöjännitettä ja taajuutta joka on merkitty liitäntälaitteeseen. Kytke virta pois päältä ennen asennusta tai huoltoa. Tämä asennusohje on säilytettävä ja sen on oltava käytössä asennuksessa ja huollossa.

Vi rekommenderar att installationen görs av en behörig elektriker. Använd endast driftspänning och frekvens som är märkt på förkopplingsdonet. Bryt av strömmen för installation eller service. Denna monteringsanvisning bör sparas och finnas tillgänglig vid installation eller framtida service.

Only a professional electrician is allowed to do the installation. Use only rated voltage and frequency as marked in the driver. Switch off the current before installation or service. This mounting instruction must be kept available during installation and for future maintenance.

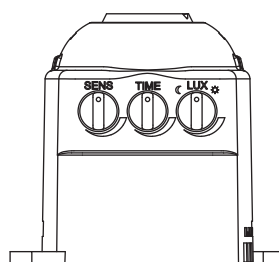
LUMI II PIR/M-S NRO 4297217 / A2LUFP



SETTING

Specification

Power source:	220 – 240V/AC
Power frequency:	50Hz
Ambient light:	3 – 2000 lux (adjustable)
Time-Delay:	min: 15 s ± 8 s max: 8 min ± 2 min
Rated load:	300 W (LED lamp)
Detection distance:	2 – 6 m (<24 °C) (adjustable)
Detection range:	120°
Working temperature:	-20 ~ 40 °C
Working humidity:	<93%RH
Installation height:	2 ~ 3 m
Power consumption:	0.45W (work) 0.1W (static)
Detection motion speed:	0,6 ~ 1,5 m/s



FUNCTION

- Can identify day and night: The consumer can adjust work ambient light. It can work in the daytime and at night when it is adjusted on the "sun" position (max). It can work in the ambient light less than 3 lux when it is adjusted on the "moon" position (min). As for the adjustment pattern, please refer to the testing pattern.
- SENS adjustable: It can be adjusted according to using location: 10W sensitivity with 2 m for detection distance; high sensitivity with 8 m, it fits for large room.
- Time-delay is added continually: when it receives the second induction signals after the first induction, it will compute time once more on the rest of the time-delay basic (set time).
- Time-delay adjustment: It can be set according to the consumer's desire. The minimum time is 5 s ± 1 s. The maximum is 8 min ± 2 min.