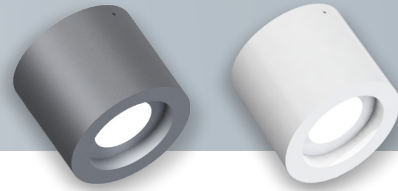


ILLUXTRON® CYLINDER 100

HV-400/600 LM



Specifications

CYLINDER 100 HV	
Color (XX) (choose white or grey)	MW = Matt white ral 9016 / GR = Matt grey ral 9006
Input voltage	220-240V~ 50/60 Hz
Lumen output	400 Lm / 600 Lm
Beam angle	60°
Material	Diecast aluminum
Environment	Indoor, outdoor and cove lighting
Protection against water	IP20
Protection against shock	IK02
Powerfactor (Pf)	400 Lm = 0,91 / 600 Lm = 0,98
Dimmable	Yes, see dimmer compatibility at page 18
Operating temperature	-20°C / +45°C
Safety norms	EN60598 / EN62031 / EN62471
EMC norms	EN55015
Quantity single package	1 pc
Weight single package	446 gr
Dimensions single package	105x105x105 mm
Quantity per carton	35 pcs
Dimensions carton	600x400x400 mm (0.096 m³)
Quantity per pallet	560 pcs
Expected lifetime at 25°C (L70)	50.000 hrs
Warranty	3 years

All values are measured at 230V (+/- 7%)

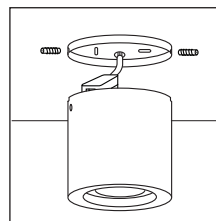
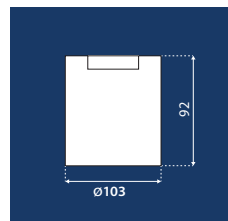


Product variations

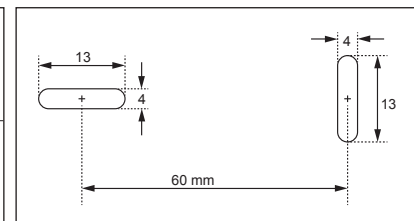
Description	Article no. DIMMABLE	W	Efficacy	CRI
Cylinder 100 HV-400 Lm 3000K	757003XX2002	9W	45 Lm/W	82
Cylinder 100 HV-600 Lm 2700K	757603XX1702	11W	55 Lm/W	82
Cylinder 100 HV-600 Lm 3000K	757603XX2002	11W	55 Lm/W	82
Cylinder 100 HV-600 Lm 4000K	757603XX2402	11W	55 Lm/W	82

All values are measured at 230V (+/- 7%)

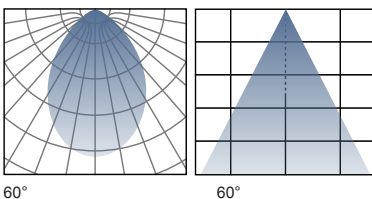
Measurements



Fixation dimensions



Photometrics



Expected lifetime data

Test information	Tj 220V	Expected Lifetime	Tj 230V	Expected Lifetime	Tj 240V	Expected Lifetime
Test data from LED supplier	33°C	50.000 Hrs	33°C	50.000 Hrs	33°C	50.000 Hrs
Test data from LED supplier	63°C	50.000 Hrs	63°C	50.000 Hrs	63°C	50.000 Hrs
Test data from LED supplier	93°C	27.000 Hrs	93°C	27.000 Hrs	93°C	27.000 Hrs
Cylinder 100 HV-400 Lm	59°C	50.000 Hrs	64°C	49.000 Hrs	69°C	45.000 Hrs
Cylinder 100 HV-600 Lm	63°C	50.000 Hrs	64°C	49.000 Hrs	65°C	48.000 Hrs

• Lifetime date is tested in a closed ceiling without insulation material covering the downlight housing
• Expected lifetime measured at Ta 25°C (L70)

Manufacturer	Model	Type	Load	HV-75/90 400 Lm	HV-75/90 400 Lm + Dimming cable	HV-75/90 600 Lm HV-185 1250/2000 Lm
Berker	2830 10	R	60-400 W	✗	✓ 10-100%	✓ 20-100%
Berker	2867 10	RC	20-360 W	✗	✓ 10-100%	✓ 40-100%
Berker	2873	RL	20-500 W	✗ 40-90%	✓ 0-100%	✓ 20-100%
Busch Jaeger	6523U	RL	2-100 W	✓ 10-100%	✓ 0-100%	✓ 0-100%
Busch Jaeger	2247U	RL	20-250 W	✓ 20-100%	✓ 0-100%	✓ 0-100%
Elimpo	ECODIM9XX	-	3-80 W	✓ 0-100%	✓ 0-100%	✓ 0-100%
Eltako	EUD61NPN-UC	RLC	0-400 W	✓ 0-100%	✓ 0-100%	✓ 20-100%
Feller	40600.RL	RL	40-600 W	✗ 20-80%	✓ 0-100%	✓ 20-100%
Feller	40300.RC	RC	20-300 W	✓ 10-100%	✗	✓ 40-100%
Feller	40420.RLC	RLC	40-420 W	✗	✗	✗
Gira	1184-00	R	60-400 W	✗	✓ 10-100%	✓ 20-100%
Gira	1182-00	RC	20-360 W	✗	✓ 10-100%	✓ 40-100%
Gira	2262-00	RL	20-500 W	✗ 40-90%	✓ 0-100%	✓ 20-100%
Jung	244 EX	R	60-400 W	✗	✓ 10-100%	✓ 20-100%
Jung	243 EX	RC	20-360 W	✗	✓ 10-100%	✓ 40-100%
Jung	225 NV DE	RL	20-500 W	✗ 40-90%	✓ 0-100%	✓ 20-100%
Legrand	078406	RLC	8-300 W	✓ 10-100%	✓ 10-100%	✓ 10-100%
Legrand	067085	RLC	8-300 W	✓ 10-100%	✓ 10-100%	✓ 10-100%
Niko	310-0190X	RLC	5-325 W	✗ 20-80%	✓ 10-100%	✓ 20-100%
Niko	330-00700	RLC	5-350 W	✗ 20-80%	✓ 10-100%	✓ 30-100%
Norwegian	KED400	R	35-400 W	✓ 10-100%	✓ 10-100%	✓ 10-100%
Norwegian	KED600	R	35-600 W	✓ 10-100%	✓ 10-100%	✓ 10-100%
Peha	433 HAB	RC	20-315 W	✗ 40-90%	✓ 10-100%	✗
Peha	434 0A	R	60-400 W	✗ 60-80%	✓ 10-100%	✗
Peha	492 AB	RC	60-525 W	✗	✗	✗
Peha	492 AN	RL	60-600 W	✗	✗	✗
Schneider (Merten)	MTN5131	R	40-400 W	✗ 20-80%	✓ 0-100%	✓ 20-100%
Schneider (Merten)	MTN5133	RL	40-600 W	✗ 20-80%	✓ 0-100%	✓ 20-100%
Schneider (Merten)	MTN5136	RC	20-315 W	✗	✗	✓ 40-100%
Schneider (Merten)	MTN5138	RLC	20-420 W	✗	✗	✗
Schneider (Merten)	MTN5139	RLC	20-600 W	✗ 20-80%	✗	✓ 30-100%
Schneider (Merten)	MTN577099	RLC	25-420 W	✗	✗	✗
Schneider (Merten)	MTN577899	RC	20-315 W	✗	✓ 20-100%	✓ 40-100%
Schneider (Merten)	MEG5170	RLC	10-200 W	✗	✗ 40-80%	✗ 40-80%

✓ = ok ✗ = not advised

SURFACE MOUNT

BENEFITS

- Revolutionary AC LED technology
- Can be connected directly to 220-240V outlets (no converter needed), which ensures high reliability

FEATURES

- Dimmable with most RL dimmers
- Powered by high quality Energy Star LED type
- Comparable with mains voltage halogen GU10-50W
- 82% energy saving compared to mains voltage halogen GU10-50W
- Consistent color between each luminaire
- Homogeneous light beam
- Antiglare protection
- No heat and UV radiation
- Comply with the latest Powerfactor norms (>0.90)
- No radio signal interference

ANNUAL SAVINGS 75 HV

Burning hours: 10 hrs x 300 days = 3000 hrs per year

Electricity savings 400 Lm:

50W - 9W = 41W x 3000 hrs = 123 kWh x €0,25 = €30,75

Maintenance cost: 2 lamps x 0,25 hr x €35 = €15

Lamp replacement cost: €4,95 x 2 = €9,90

Total annual savings: €60,77 per lamp unit.

Electricity savings 600 Lm:

50W - 11W = 39W x 3000 hrs = 117 kWh x €0,25 = €29,25

Maintenance cost: 1 lamp x 0,25 hr x €35 = €8,75

Lamp replacement cost: €11,00

Total annual savings: €49,00 per lamp unit.

ANNUAL SAVINGS 185 HV

Burning hours: 10 hrs x 300 days = 3000 hrs per year

Electricity savings 1250 Lm:

36W - 22W = 14W x 3000 hrs = 42 kWh x €0,25 = €13,-

Maintenance cost: 1 lamps x 0,25hr x €35 = €8,75

Lamp replacement cost: 1 x €4,- = €4,-

Total annual savings: €25,75 per lamp unit.

Electricity savings 2000 Lm:

52W - 22W = 30W x 3000 hrs = 90 kWh x €0,25 = €22,50

Maintenance cost: 1 lamp x 0,25 hr x €35 = €8,75

Lamp replacement cost: 1 x €4,- = €4,-

Total annual savings: €35,25 per lamp unit.