

OSTENDE 3

high-quality Nordic spruce



Log cabin
OSTENDE 3
 400 x 300 cm

design suggestion

- 28 mm wall logs
- « Trend » corner connection
- floor 19 mm
- not colour-treated





LOG CABIN OSTENDE 3 400 x 300 cm

Data sheet / Construction description

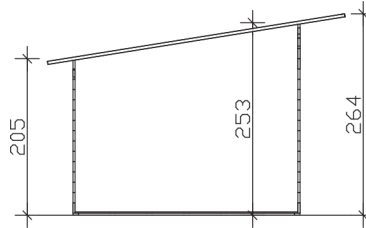
Wall thickness	28 mm
Color treatment	untreated
Corner construction	Trend, obtuse corner design
Wind bracing	Corner post with screw connection
Mounting material	Included
Iron parts	galvanized
Width	400 cm
Length	300 cm
Total width	440 cm
Total length	380 cm
Height sidewall	205 cm
Roof ridge height	264 cm
Number of rooms	1
Base surface	12 m ²
Building volume (without canopy)	27,42 m ³
Wall surface outside	30,47 m ²
Floor	19 mm floorboards, untreated
Ground supports	28 x 70 mm, impregnated
Roof construction	19 mm roof boards
Roof shape	Pent roof

Roof pitch	9 °
Snow load	0,75 kN/m ²
Roof overhang (front)	60 cm
Roof overhang (lateral)	20 cm
Roof overhang (behind)	20 cm
Roof surface	17 m ²
Roofing	1 layer of roofing felt
Roofing membrane requires 5m²	4 rolls
Doors	1x Double door with side window elements (123,4 x 193 cm)
Windows	4x Single window, Tilt-and-turn function (57,5 x 153,5 cm)
Article code	603718
Barcode	4018211603718
Packaging dimensions	packet 1: 120 cm x 450 cm x 58 cm 890,0 kg
Guarantee	5 year warranty on wood, construction and stability when properly assembled and cared for according to our guarantee undertaking
not included	Cement, anchoring basic storage with underground (foundation)

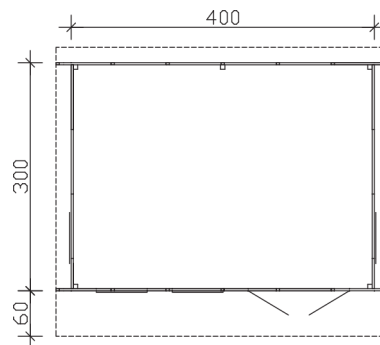
OSTENDE 3

400 x 300 cm

Drawing
section



Ground
plan

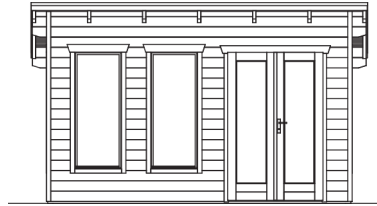


OSTENDE 3

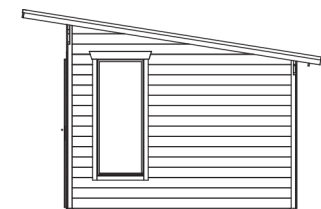
400 x 300 cm

floor plan, cross section and elevations M 1:100

Front view



View from
the right

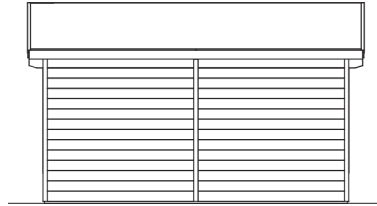


OSTENDE 3

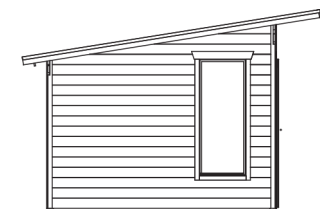
400 x 300 cm

floor plan, cross section and elevations M 1:100

View from
behind



View from
the left



OSTENDE 3

400 x 300 cm

floor plan, cross section and elevations M 1:100