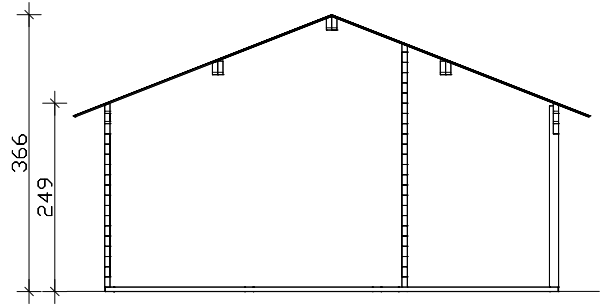


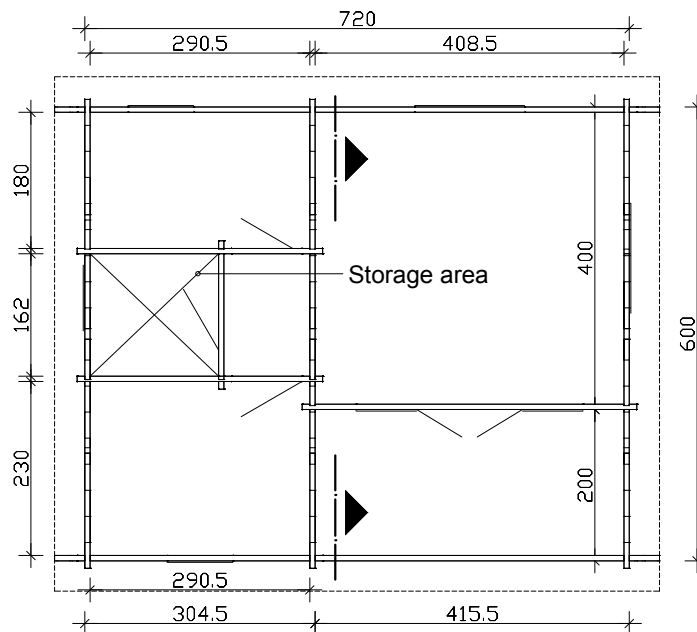
SKAN HOLZ Log cabins

1. 70mm planks as stable wall construction
2. concealed cross-bracing for optimum utilization of space
3. profiled corner connections for reliable protection against rain

SKAN HOLZ
corner connections



Using storage area at your own risk!



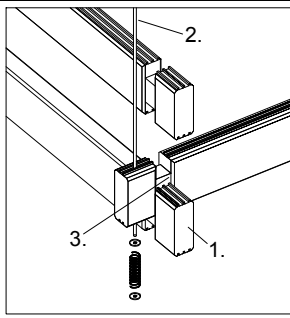
Floor plan and cross-section M 1:100

Ontario 720 x 600cm

Data sheet / construction description

Ontario 70plus

Walls	70mm wooden planks, untreated
Ground supports/floors	60x60mm/60x113mm, impregnated / 28mm floor planks, untreated (Insulation by costumer possible)
Iron parts	galvanized
Width x depth	720cm x 600cm with roof extension 40cm, around circumference
Height, eaves / gable	249cm / 366cm
Area / building volume	43,20m² / 132,84m³ (without roof extension)
Roof inclination/- area	21° / 58,24m²
Snowload	max. sk = 1,75kN/m² (roofing tiles)
Inclusive	1 outside door , 3 interior doors, 3 tilt- and turn single windows, 2 tilt- and turn double windows , concealed tie rod construction, profiled corner connections
By costumer	Insulation, assembly ground supports with subsoil

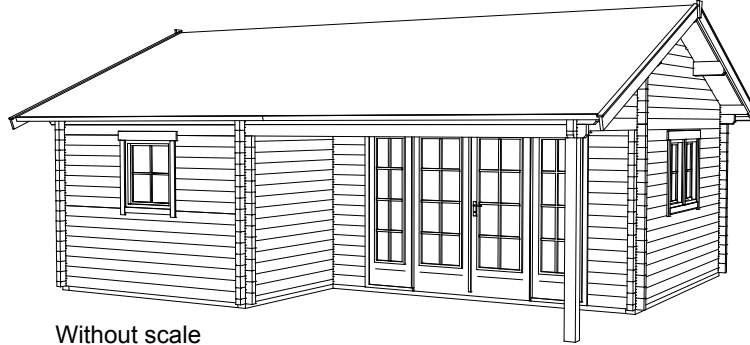


SKAN HOLZ
Log cabins

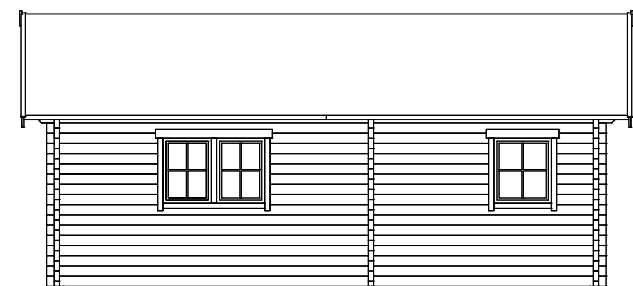
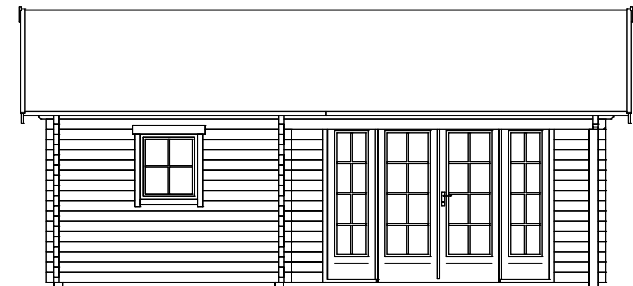
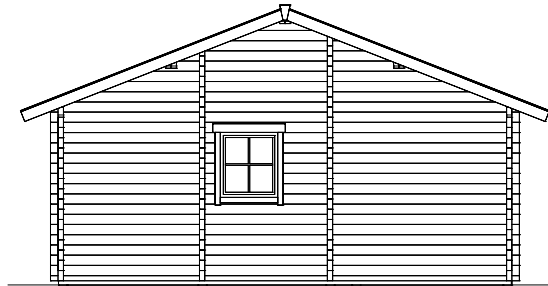
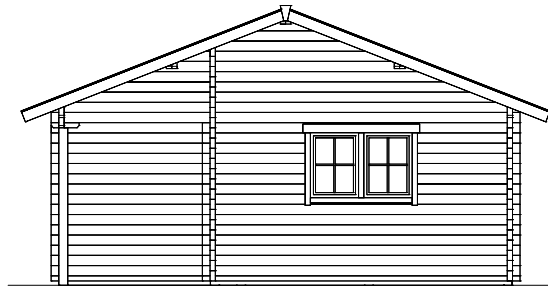
1. 70mm planks as stable wall construction
2. concealed cross-bracing for optimum utilization of space
3. profiled corner connections for reliable protection against rain

SKAN HOLZ
corner connections

Ontario 70plus



Without scale



Elevations M 1:100