



▲ St. Moritz 3 (with insulation kit "tiles" and tiles)



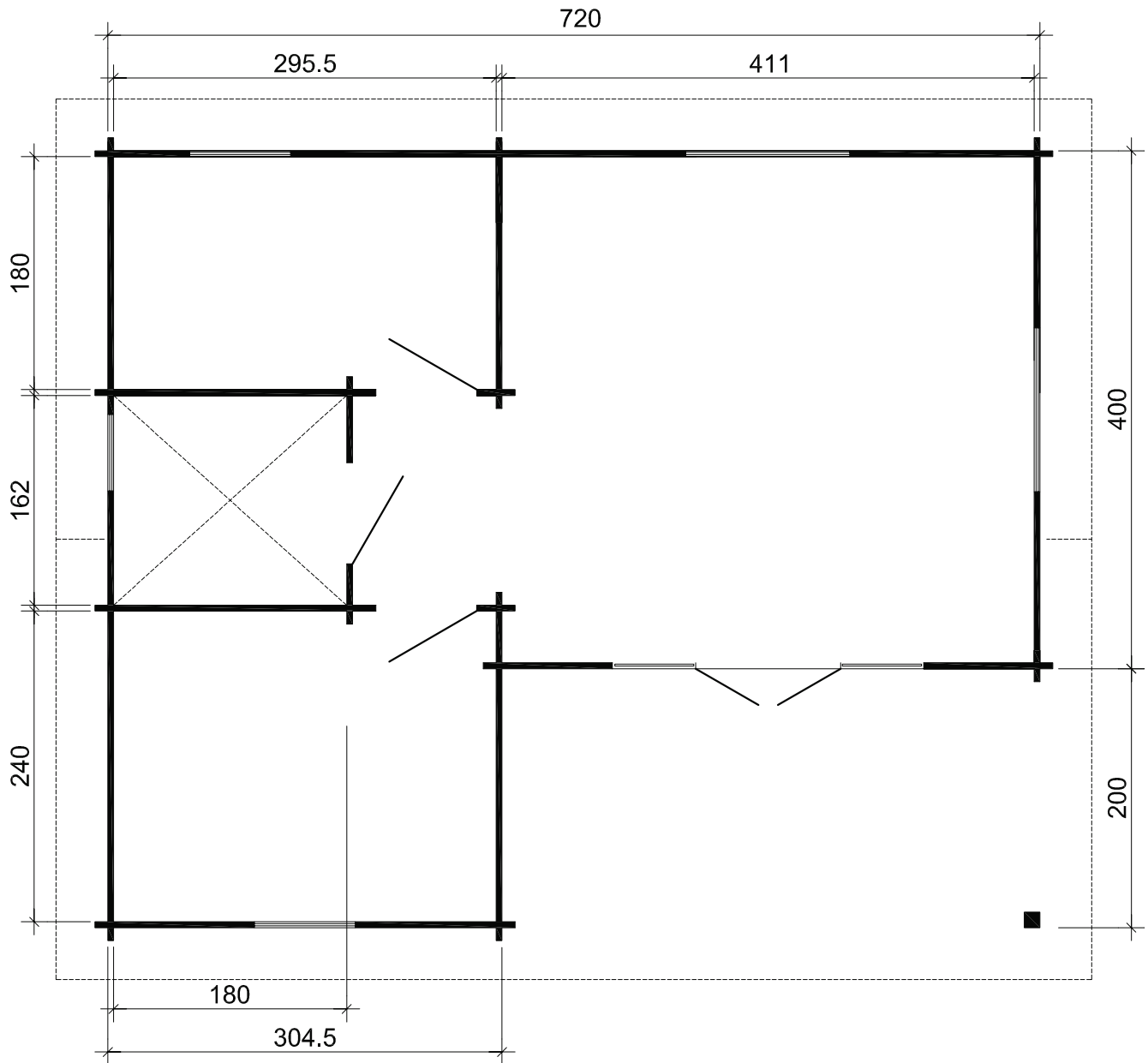
▲ Floor plan of St. Moritz 3

45plus St. Moritz 3

Width x depth	720 x 600 cm
Height	235 cm/348 cm
Area	34,89 m ²
Walls	45 mm
Floor/roof	19 mm/19 mm
Snow load	sk = 1,25 kN/m ²
Windows/doors	Insulating glazing

70plus Ontario 3

Width x depth	720 x 600 cm
Height	249 cm/354 cm
Area	34,89 m ²
Walls	70 mm
Floor/roof	28 mm/28 mm
Snow load	sk = 1,75 kN/m ²
Windows/doors	Insulating glazing



Floor plan with
45 mm walls

Basic kit	45plus St. Moritz 3	70plus Ontario 3
Width x depth	720 x 600 cm	720 x 600 cm
Height eaves/gable	235 cm / 348 cm	249 cm / 354 cm
Area/building volume	34,89 m ² / 101,70 m ³	34,89 m ² / 105,19 m ³
Roof inclination/roof area	21° / 57,68 m ²	19° / 60,00 m ²
Walls	45 mm	70 mm
Floor/roof	19 mm / 19 mm	28 mm / 28 mm
Snow load (roofing tiles)	Max. sk = 1,25 kN/m ²	Max. sk = 1,75 kN/m ²
Windows/doors	Insulating glazing	Insulating glazing