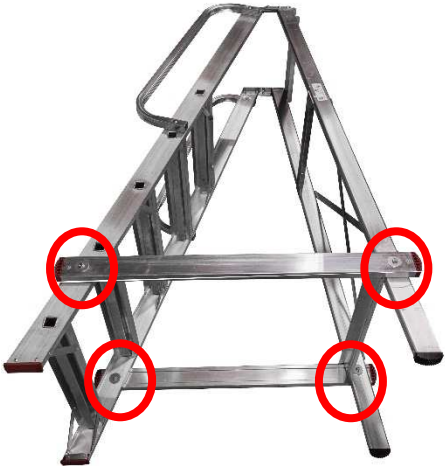


KTT-ladder assembly

Tools needed:

2 x 13 mm wrench and 1 x 10 mm wrench



Open the ladder sideways on to the floor.

Attach the sidebar into the holes on the ladder with M8x40mm sized bolts. Remember to put the washer both inside and outside (likewise as the bolt already assembled in factory).

Bolts and nuts are attached on to the sidebar for freight.

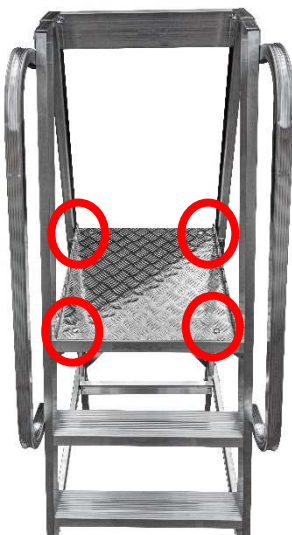
Unlike shown on the picture, the larger models of the ladder have two sidebars each side.

Tighten all the bolts, also the ones already attached at the factory!



Once all the sidebars have been attached to the ladder and properly tightened, turn the ladder upright.

Now attach the working platform.



Attach the longer bolts (M6x45mm) to the front of the ladder onto the step.

To the backside of the platform use the shorter bolts (M6x16mm)

Make sure to put the domed head of the bolt onto the platform, so that the bolt will lock into its place and can be tightened using a single wrench.

Put the washer and the nut to the underside of the platform and tighten.