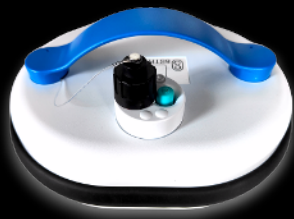




8STREME

7311



ENGLISH

ver 24-01



8STREME

7311

Congratulations on the purchase of your new 8STREME 7311 pool cleaner. It is a powerful autonomous robot delivered ready to use. Ideal for pools of all sizes and in all forms. This robot comes with an easy accessible debris basket along with floating battery pack for ease of use and cleaning range.

Please check the package to make sure that all parts are ready to be installed.

We recommend that you check the connections of the cables from the cleaner to the floating battery pack (chapter 4). If any parts are missing or damaged, please contact 8STREME directly on www.8streme.eu

Table of contents

01 Product features	p04.
02 Warnings and Safety informations	p04.
03 Package contents	p05.
04 Start-up	p06.
05 Climbing walls	p08.
06 Cleaning the filter basket	p09.
07 Cleaning the impeller	p10.
08 Troubleshooting	p11.
09 Spare parts list	p14.
10 Spare parts drawing	p16.

01 Product features

Maximum Depth: 2,5m

Maximum size of the pool: 10m x 5m

Input current: 100-130V AC / 200-230V AC

Output current: <24VDC

02 !! Warnings and Safety informations !!

- 2.1 Please refer to the rules of your country regarding swimming pool safety.
- 2.2 Place the charger at least 3.5 m from the pool.
- 2.3 If the cables delivered are damaged, they must be replaced by the manufacturer, a service centre approved by the manufacturer or a qualified person to avoid any risk.
- 2.4 Please make sure that your electrical system is well protected by a 30mA ground fault circuit interrupter (GFCI)
- 2.5 Do not use extension cord.
- 2.6 This unit must only be used with the supplied battery pack.
- 2.7 This appliance can be used by children aged from 8 years and above and persons with reduced physical, sensory or mental capabilities or lack of experience and knowledge if they have been given supervision or instruction concerning use of the appliance in a safe way and understand the hazards involved.
Children shall not play with the appliance.
Cleaning and user maintenance shall not be made by children without supervision.
- 2.8 Keep the battery pack and charger away from moisture.
- 2.9 Do not use the robot out of the water.
- 2.10 Make sure that the transformer is disconnected before performing maintenance on the robot.
- 2.11 Don't use any damaged power cable or cord.
- 2.12 Do not use the robot if people are in the pool.
- 2.13 Do not use the swimming pool when the cleaner is in the pool.
- 2.14 Remove the robotic cleaner from the swimming pool when not in use
- 2.15 The use of the robot should be in a pool whose temperature is between 15 and 36°C. Too low water temperature can affect the operation and longevity of the pool robot. The ideal temperature for optimal cleaning is 15°C minimum.
- 2.16 Make sure to maintain a pH close to 7.2 for optimal performance, especially on the ability to climb walls.
- 2.17 Do not use the robot if you have a counter-current swimming device working.
- 2.18 If the ambient air temperature exceeds 35°C, place the battery charger under the shade

03 Package contents

1. 7311 Robotic pool cleaner
2. Battery Pack Charging Transformer
3. Detachable Floating Battery Pack
4. Sample of fine filter
5. Retrieval hook



Detachable floating battery pack is inside the debris basket



QUICK FACTS

- Our robots are designed to facilitate the maintenance of your pool. However, they are not intended to clean a pool full of algae and leaves (ex: end of winter period). In this case you must: use the leaf skimmer, clean the filter and put back on the filter and the pump.
- A tile coating leads to faster wear of the brushes and belts. Please check these regularly.



- To remove the cleaner from your pool, attach the supplied retrieval hook to standard cleaning pole (cleaning pole not included), hook onto the handle of the floating battery pack, pull the battery pack to you until you can grasp the cable, lift the cable slowly and gently until you can grab the robot by the handle. Use the handle to fully pull out the cleaner
- In order to access the filter basket, place hands as shown in picture. Push with thumbs to unlock lid.

04 Start-up



4.1 Take the power cord from the robot to connect to the battery pack.



4.2 Insert the blue plug into battery pack as far in as you can.



4.3 Take the black cap of the power cord and screw onto the battery pack.



4.4 Hand tighten the cap. Do not use tools to over-tighten the cap.



4.5 Unscrew the charging plug cap on the top of the battery pack.



4.6 Before inserting the charging cord into the battery pack, take note of the notch on the battery pack that corresponds with the slot on the charging cord. The plus is NOT designed to be inserted at an angle.

04 Start-up



4.7 Insert the charging cord into the battery pack. If the cord is not inserted in the correct orientation as indicated with the notch and slot, you can cause damage to the cleaner, battery pack or charger.



4.8 When charging the battery pack, a LED light on the charger will turn on. A red light will indicate that the battery is charging. A green light will indicate a fully charged battery.



4.9 After fully charging the battery pack, unplug the charging cord and screw back on the cap to the plug on the battery pack. Hand tighten until secured.



4.10 Place the robot in your pool and wait until it is completely submerged. If necessary, help it to sink manually.



4.11 To activate your cleaner, press button at the top of the battery pack. A LED light next to the button will turn on. The robotic cleaner will now run its 2 hours cleaning cycle and then automatically turn off. If you want to turn the cleaner off early, press and hold the button.



4.12 At the end of the cleaning cycle the robot will move to an edge of your pool. Use the retrieval hook supplied with your cleaner to remove the cleaner out of the pool. The tool is designed to hook onto the handle of the cleaner. When the cleaner is close to the surface of the water, use your hand to grasp the handle of the cleaner. Slowly lift the cleaner out of the pool and let the water drain out of the cleaner.

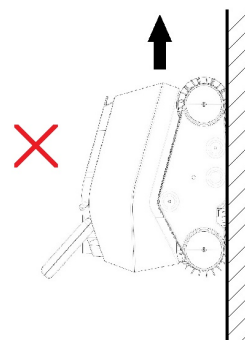
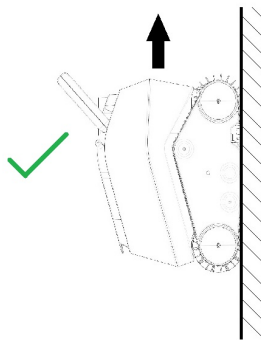
4.13 Do not remove your robot out of water immediately after the end of its cleaning cycle so as not to cause a temperature shock.

4.14 When the cleaner is no longer used for an extended period, screw on the protective caps and store your robot and battery pack indoors.

05 Climbing Walls

In order to be efficient while cleaning the waterline, the robot is designed to climb up the waterline with the orientation that offers the most effective brushing.

It is therefore normal to see it climb to the waterline only by the side with the handle.



06 Cleaning the filter basket



6.1 In order to access the filter basket, place hands as shown in picture. Push upward 5 cm with thumbs to unlock cover.



6.2 Use both hands to lift the basket with the handles on the sides of the basket



6.3 Open the lid of the basket by pulling the tab on the front of the basket and empty content.

6.4 Empty the debris inside the basket. Use a jet of water to rinse the faces inside and outside the basket filter panels. Also inspect and clean the inside and outside of the robot.



6.5 Once cleaned, replace the basket in the robot. If the basket is not properly aligned, it is not possible to close the cover of the cleaner.

6.6 Press down the handles to lock your basket

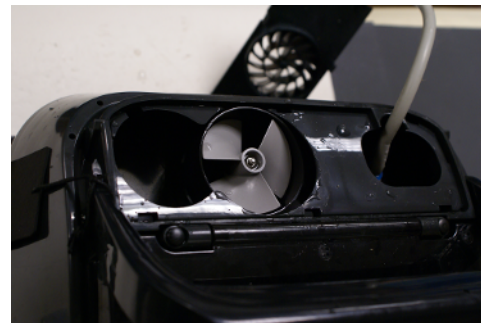
07 Cleaning the impeller

Some debris can clog or be wrapped around the impeller of the pump. By force, these debris can hinder the proper functioning of the robot or even damage the engine.

Regular visual inspection is part of the normal maintenance of the robot.



7.1. Use a flat screwdriver to remove the protective grille.



7.2 Clean the impeller.

7.3 Replace the grill guard.

08 Troubleshooting

PROBLEM	CAUSE(S)	SOLUTION(S)
The robot floats on the surface.	<ul style="list-style-type: none"> - Immersion of the robot in the pool. - Basket clogged/full - An object is stuck in the turbine or the grid located above the turbine. - Use of the fine filter. - Water level in the pool. 	<ul style="list-style-type: none"> - When you put the robot in the pool, let it sink and reach the floor before you turn it on. - Check that the impurity collection basket is not full. - Check that there are no foreign objects in the turbine or blocked in the grille above the turbine. - If you use an optional fine filter, remove the filter from its plastic wrap, immerse the filter in the water so that it is already wet before you put it in the robot and let the robot settle on the floor before you turn it on. - If your pool water level is too high, the robot might turn around and take in the air if it touches the top seats, in this case to adjust the level of the pool.
The robot does not clean all areas of the pool.	<ul style="list-style-type: none"> - Pool size may be larger than maximum pool size listed on Product Features - An object blocks the rollers, the wheels of the robot or hinders the movement of the robot. 	<ul style="list-style-type: none"> - Fully charge your battery pack and run another cleaning cycle. - Our robots are designed to facilitate the maintenance of your pool/ However, they are not intended to be the sole tool used to clean a pool fully of algae and leaves (ex: end of winter period). Additional tools and cleaning cycles will be needed. - Insert the robot at the center point of the pool. If your pool is oval or rectangular, this point is the middle of the length. - Check that there is no foreign object blocking the hydraulic circuit or the brushes and belts under the robot and on the sides.
The robot does not recover debris during operation. Fine particles (dust or dirt, pollen ...) are ejected by the impeller.	<ul style="list-style-type: none"> - The robot does not receive enough power. - Basket clogged / full. - An object is stuck in the impeller or the grid located above the impeller. - Debris are too fine, the robot is made to pick up the particles more than 50 microns (with the fine filter inside the basket). 	<ul style="list-style-type: none"> - Check the connection of the cables. - Clean the basket and filter panels. Clean the fine filter if you use this accessory. - Check if the basket is properly inserted. (See chapter Cleaning of the filter basket). - Check that there are no foreign objects in the impeller or blocked in the grid above the impeller - Check the attachment of the basket, press it if necessary to lock it. - Use a fine filter (check item number on the parts drawing 20, sku 71170) on the other hand do not forget that it is the filtration of your swimming pool which ensures the cleaning of the particles of less than 50 microns.

PROBLEM	CAUSE(S)	SOLUTION(S)
The robot moves in one direction.	<ul style="list-style-type: none"> - An object blocks the rollers, the wheels of the robot or interfering with the movement of the robot. 	<ul style="list-style-type: none"> - Check that there are no foreign objects in the impeller located above the motor. - Check that there are no foreign object blocking the hydraulic circuit or the brushes and belts under the robot and sides.
The robot does not move and the filtration pump does not work either. The robot doesn't work any longer.	<ul style="list-style-type: none"> - The robot is not connected to a battery pack. - Power off. 	<ul style="list-style-type: none"> - Check that the battery pack is turned on and that the LED light is turned on. - Check that the LED light stays on during cleaning cycle. - Check all connections of the robot to the battery pack
The pump runs but the robot does not move. The robot turns on but stays on the spot.	<ul style="list-style-type: none"> - No / not enough power is transmitted to the robot . - An object blocks the rollers, the belts, the wheels of the robot or the path. - Possibility of motor problem. 	<ul style="list-style-type: none"> - Take out the robot in the water and unplug from the battery pack. Open the cover of the robot and remove the basket. - Check that there are no foreign objects in the impeller located above the motor. - Check that there are no foreign object blocking the hydraulic circuit or the brushes and belts under the robot and sides. - Contact the After-sales Service
Robot does not climb walls.	<ul style="list-style-type: none"> - The robot is too heavy. - The flow is not enough. - The walls are too slippery . - The handle of the robot is poorly directed. - pH level is too high. Keep the pH level close to 7.2 to avoid slippery walls 	<ul style="list-style-type: none"> - Check that the collection of debris basket isn't full - Check and clean if need the impeller of the pump or the grid at the top of the impeller (propeller on top of the robot toward the handle) - Presence of algae on the walls or fatty deposits. Remove algae using the chemical treatment of water and manual brush to remove these fatty deposits. - Check that the handle of the robot is directed to the rear. The cable should be above the handle. - Check that the drain valve is not broken.
The robot goes round in circles.	<ul style="list-style-type: none"> - A belt is damaged. - One of the 4 side wheels is damaged or unscrewed. 	<ul style="list-style-type: none"> - Check the condition of the drive belts. If necessary, replace the faulty belt. - Check the wheels bolted to the ends of the rollers. These wheels fit on the roll and then screw.

PROBLEM	CAUSE(S)	SOLUTION(S)
The robot stops after a few minutes.	<ul style="list-style-type: none"> - Connection of the floating cable. - Possibility of fault of the floating cable. - Possibility of motor leakage. 	<ul style="list-style-type: none"> - Check the connection of the floating cable. Disconnect and reconnect as needed. - Check the status of the connectors at the ends of your cables (damaged, rusted, etc.)
The robot moves slower than before.	<ul style="list-style-type: none"> - The robot is too heavy. - The flow is not sufficient. - Battery pack is near end of life 	<ul style="list-style-type: none"> - Check that the dirt collecting basket is not full. - Check and clean if necessary the pump impeller or the grid above the impeller (propeller at the top of the robot towards the handle). - Check if LED light stays on during cleaning cycle or that the robot lasts the full cleaning cycle. Contact after sales service if it does not.
No LED lit on the battery pack	<ul style="list-style-type: none"> - The power is not reaching the cleaner - Battery pack is near end of life cycle 	<ul style="list-style-type: none"> - Check that the robot lasts the full cleaning cycle after fully charging the battery pack. - Check the cable connections. - Contact our Customer Service.
No LED lit on charger	<ul style="list-style-type: none"> - Bad connection between the outlet and charger. - Bad connection between the charging cord and battery pack - Your electrical outlet is not working 	<ul style="list-style-type: none"> - Check the status of the GFCI on your outlet. - Plug in another appliance to see if electricity is flowing to the outlet - Check the connections charging cord to the battery pack. - Check if charger is connected to the outlet.
LED light does not change color on charger	<ul style="list-style-type: none"> - The charging controls may not be functioning 	<ul style="list-style-type: none"> - Check that the battery pack is properly plugged into the battery pack. - Check the metal connectors in charging cord and on battery pack for signs of damage. (Rust, corrosion, etc) - Contact our Customer Service.
No LED lit on the battery pack	<ul style="list-style-type: none"> - Battery pack may not actually be fully charged. - Possibility of motor problem. - Battery pack is near end of life cycle. 	<ul style="list-style-type: none"> - Check if the battery pack is charging abnormally quickly. - Wait until the charger has a green LED light before using the robot. - Check and clean if necessary the pump impeller or the grid above the impeller (propeller at the top of the robot towards the handle). - Please contact your dealer or our after-sales service at service@8streme.eu
The robot leaves traces on the floor or on the walls	<ul style="list-style-type: none"> - State of the brushes and/or transmission belts 	<ul style="list-style-type: none"> - These brushes and belts are wear-and-tear parts. Please check them and change them if necessary

Please contact www.8streme.eu if you have any other questions.

09 Spare parts list

DRAWING : ITEM NUMBER	SKU	PART DESCRIPTION
1	71000	Top Shell. Dark grey
2	71010	Debris basket (parts 15, and 21 included)
3	71020	Top lid. smoke
4	71052	Pump motor block
5	71070	Pump cover lid. Black
6	71220	Handle
7	71090	Geared roller tube assembly. Black
8	71100	Bottom chassis. Dark grey
9	71110	Fast drain Flap. Dark grey
10	71120	Left Side Support. Black
11	71130	Drive belts. Black - 2 pieces
12	71140	Geared wheel. Grey - 4 pieces
13	71150	Front roller tube
14	71160	Right Side Support. Black

09 Spare parts list

DRAWING : ITEM NUMBER	SKU	PART DESCRIPTION
15	71012	Non return inlet
16	36132	Charger
17	64151	Floating Cord 3m
18	30591	Floating Power Pack
19	64110	Retrieval Hook
20	71170	Fine Filter pad
21	71011	Top filter screen
22	72210	High traction brushes

10 Spare parts drawing

