

wolcraft®



GERMAN  
DESIGN  
AWARD  
SPECIAL  
2019



FURNITURE ROLLER  
FT 300



The **FT 300** furniture roller convinced the **German Design Council**.

The jury awarded the flexible moving aid from wolcraft with the **German Design Award 2019**.

The German Design Council is one of the world's leading competence centres for design and branding. With his award he honours once again the success of wolcraft's innovative product design, which we have consistently focused on the solution of user problems.



**GERMAN  
DESIGN  
AWARD  
SPECIAL  
2019**



**compact**

## **Furniture Roller FT 300**

With the 3-in-1 function, the FT 300 can be flexibly adapted to the size of the transported goods at any time. As a **compact board**, the furniture trolley effortlessly carries particularly heavy loads of up to 250kg. Thanks to the **extended V-shaped support surface**, even larger objects weighing up to 200 kg can be moved safely. For large furniture up to 100kg the FT 300 can be **completely divided**.

Equipped with 6 **ball-bearing castors** and **anti-slip pads**, the FT 300 also ensures safety and freedom of movement during transport. wolcraft gives a **10-year guarantee** on the high-quality workmanship of the scooter.



**extended**



**divided**

## The assortment

What makes the FT 300 furniture roller so strong applies to the entire wolcraft moving assortment.

Developed with a consistent user focus, the wolcraft transport and order aids are real problem solvers that make moving easier and ensure a relaxed start to your new home.

**wolcraft**<sup>®</sup>

### FT 400 - Puzzle Board

The modular set consisting of two boards carries up to 400kg and can be extended as required.



### FT 350 B - Furniture roller with handle

As a board trolley and divisible furniture trolley with 5 functions, the FT 350 B is extremely versatile.



### Carrying belt system

Fatigue-free and back-friendly carrying with 75% less effort.



### Tool bag

Plenty of storage space for frequently used tools, always ready to hand on the belt.

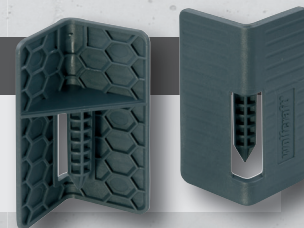
### Hand protectors

Safety and firm grip when carrying heavy and angular loads.



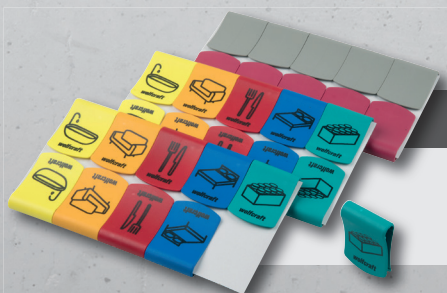
### Stacking corners

Secure, stable stacking and fast loading of cartons.



### Moving clips

Marking aid and lid clamp for perfect organisation of the move.





**wolfcraft GmbH**

Wolffstraße 1  
56746 Kempenich  
Deutschland

Telefon +49 (0) 2655 - 51-0  
Telefax +49 (0) 2655 - 51-180  
Email [info@wolfcraft.com](mailto:info@wolfcraft.com)  
Web [www.wolfcraft.com](http://www.wolfcraft.com)